

WARFIELD AT HISTORIC SYKESVILLE

Sykesville, Maryland
PARCEL A | RESIDENTIAL
Up to 36 Townhouse Units

FOR SALE BY OWNER



WARFIELD

At Historic Sykesville



Parkside at Warfield (Typical Architecture)

- Part of the Warfield at Historic Sykesville planned community
- Home sale prices in recently sold-out Parkside project in the mid-500's
- Town of Sykesville planning and zoning authority
- By-right Planned Employment Center (PEC) zoning for up to 36 residential units
- High-demand, supply constrained residential market
- Well-located site:
 - MD Route 32 frontage with easy access
 - Close proximity to Columbia (11 miles), Baltimore (15 miles), and Frederick (20 miles)
 - Easy access to I-70 (5 miles)
 - Less than one mile from charming historic downtown Sykesville

Steven D. McCleaf 301-216-3817 | smccleaf@langleyrealtypartners.com

All information contained herein regarding property for sale or lease is from sources deemed reliable, but no representation or warranty is made regarding the accuracy thereof.

WARFIELD AT HISTORIC SYKESVILLE

Sykesville, Maryland
PARCEL A | RESIDENTIAL
Up to 36 Townhouse Units

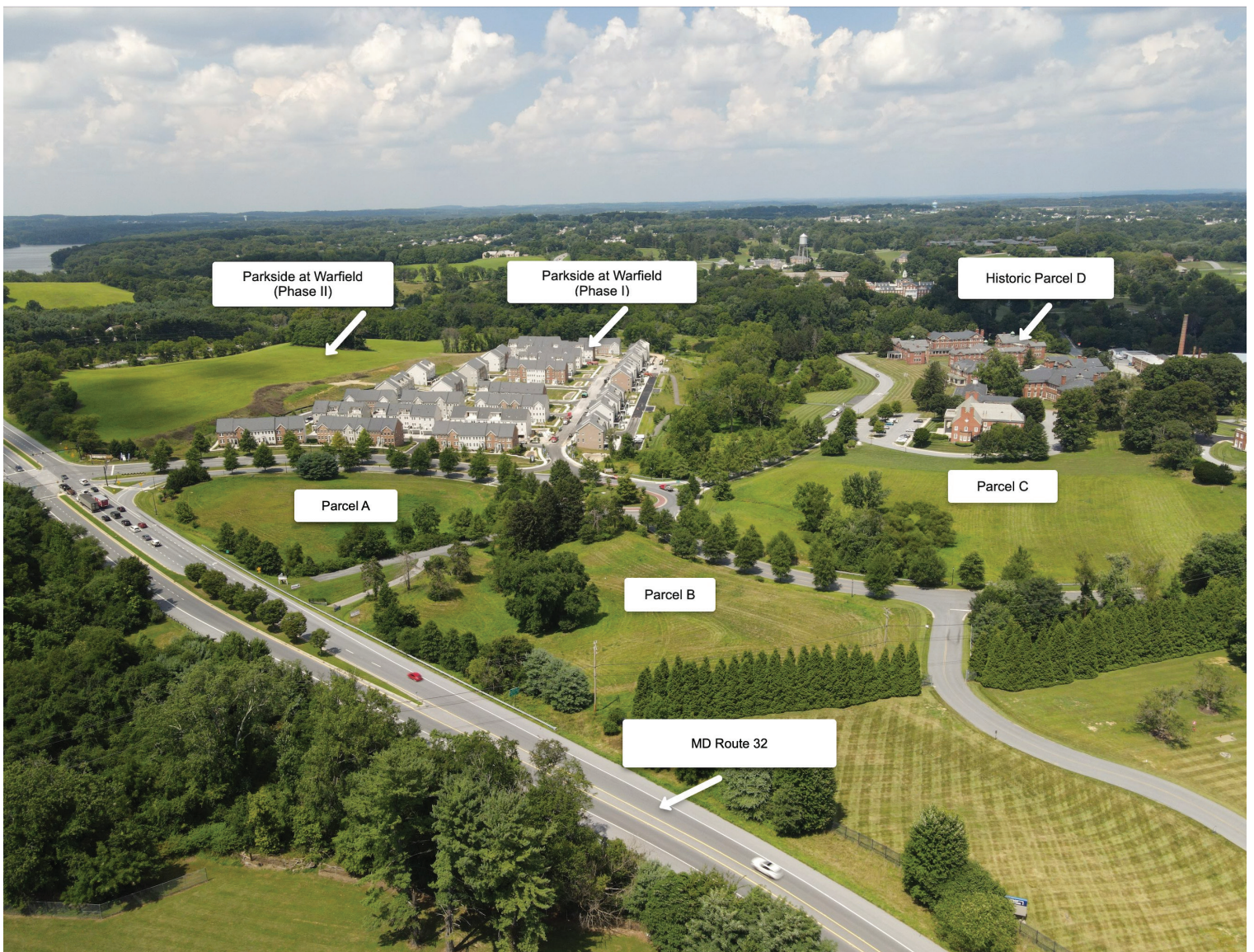
FOR SALE BY OWNER



WARFIELD

At Historic Sykesville

Aerial View Looking North



Steven D. McCleaf 301-216-3817 | smccleaf@langleyrealtypartners.com

All information contained herein regarding property for sale or lease is from sources deemed reliable, but no representation or warranty is made regarding the accuracy thereof.

WARFIELD AT HISTORIC SYKESVILLE

Sykesville, Maryland
PARCEL A | RESIDENTIAL
Up to 36 Townhouse Units

FOR SALE BY OWNER



WARFIELD

At Historic Sykesville

Conceptual Site Plan



This site plan is conceptual and for illustrative and discussion purposes only. It has not been submitted to the Town of Sykesville for discussion, review, or approval.

Steven D. McCleaf 301-216-3817 | smccleaf@langleyrealtypartners.com

All information contained herein regarding property for sale or lease is from sources deemed reliable, but no representation or warranty is made regarding the accuracy thereof.

WARFIELD AT HISTORIC SYKESVILLE

Sykesville, Maryland
PARCEL A | RESIDENTIAL
Up to 36 Townhouse Units

FOR SALE BY OWNER



WARFIELD

At Historic Sykesville

Warfield Parcel Map & Current Conditions



Steven D. McCleaf 301-216-3817 | smccleaf@langleyrealtypartners.com

All information contained herein regarding property for sale or lease is from sources deemed reliable, but no representation or warranty is made regarding the accuracy thereof.

WARFIELD AT HISTORIC SYKESVILLE

Sykesville, Maryland
PARCEL A | RESIDENTIAL
Up to 36 Townhouse Units

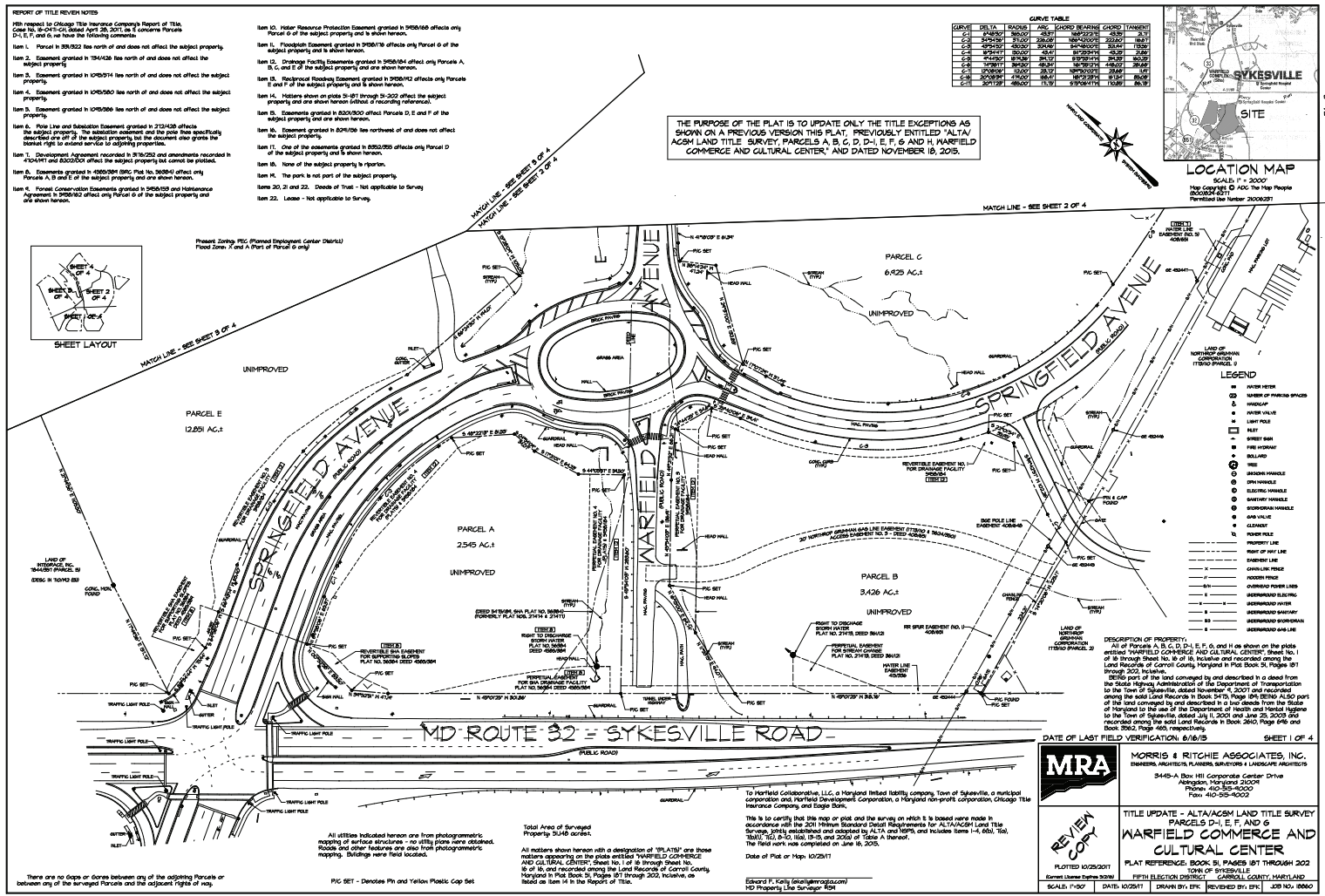
FOR SALE BY OWNER



WARFIELD

At Historic Sykesville

ATLA Survey: Parcels A & B



WARFIELD AT HISTORIC SYKESVILLE

Sykesville, Maryland
PARCEL A | RESIDENTIAL
Up to 36 Townhouse Units

FOR SALE BY OWNER



WARFIELD

At Historic Sykesville



Parkside at Warfield (Typical Architecture)



Parkside at Warfield (Typical Architecture)

Steven D. McCleaf 301-216-3817 | smccleaf@langleyrealtypartners.com

All information contained herein regarding property for sale or lease is from sources deemed reliable, but no representation or warranty is made regarding the accuracy thereof.

WARFIELD AT HISTORIC SYKESVILLE

Sykesville, Maryland
PARCEL A | RESIDENTIAL
Up to 36 Townhouse Units

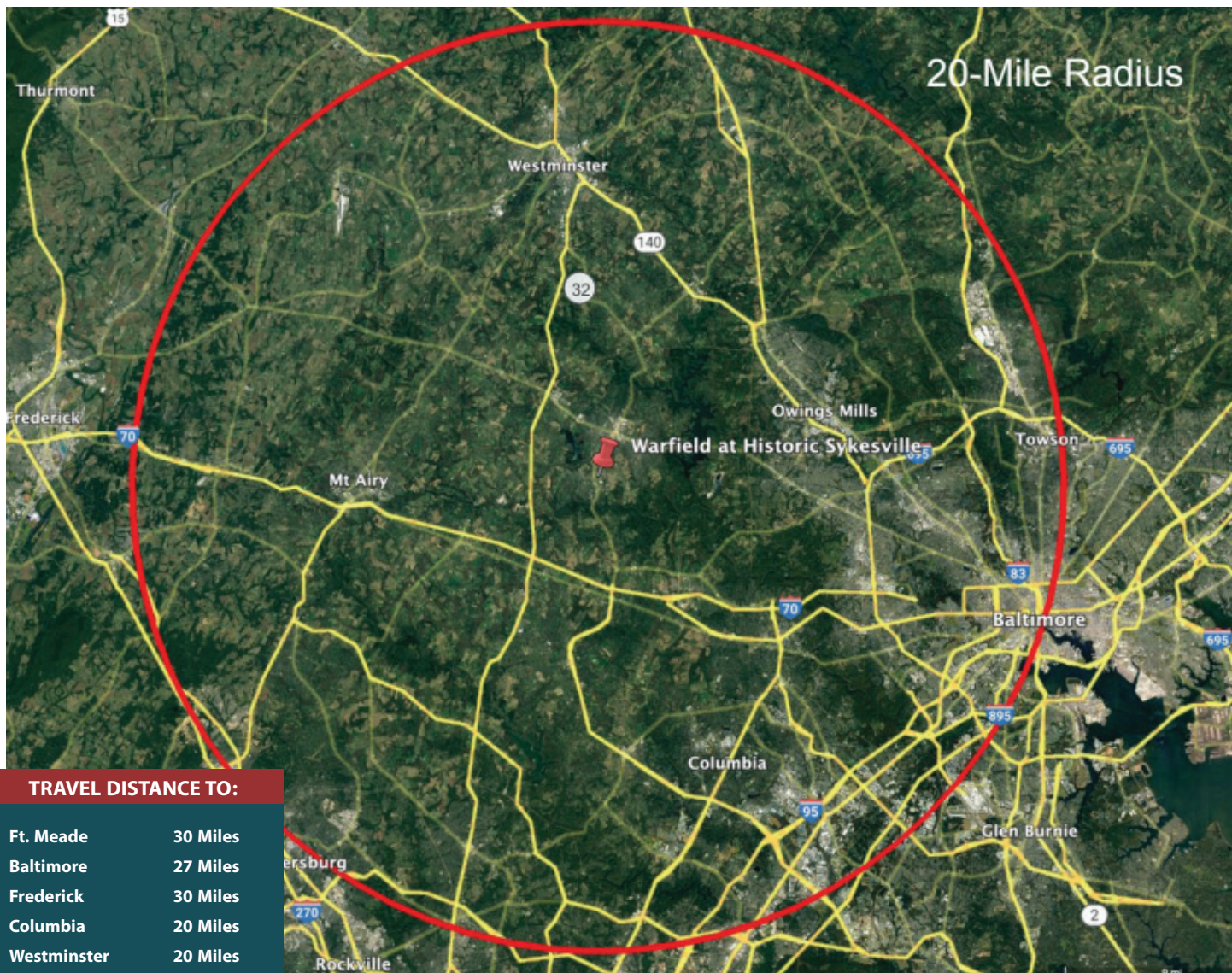
FOR SALE BY OWNER



WARFIELD

At Historic Sykesville

Location Map



Steven D. McCleaf 301-216-3817 | smccleaf@langleyrealtypartners.com

All information contained herein regarding property for sale or lease is from sources deemed reliable, but no representation or warranty is made regarding the accuracy thereof.